

Haiyaa Garment Tag Production Prepress Workflow

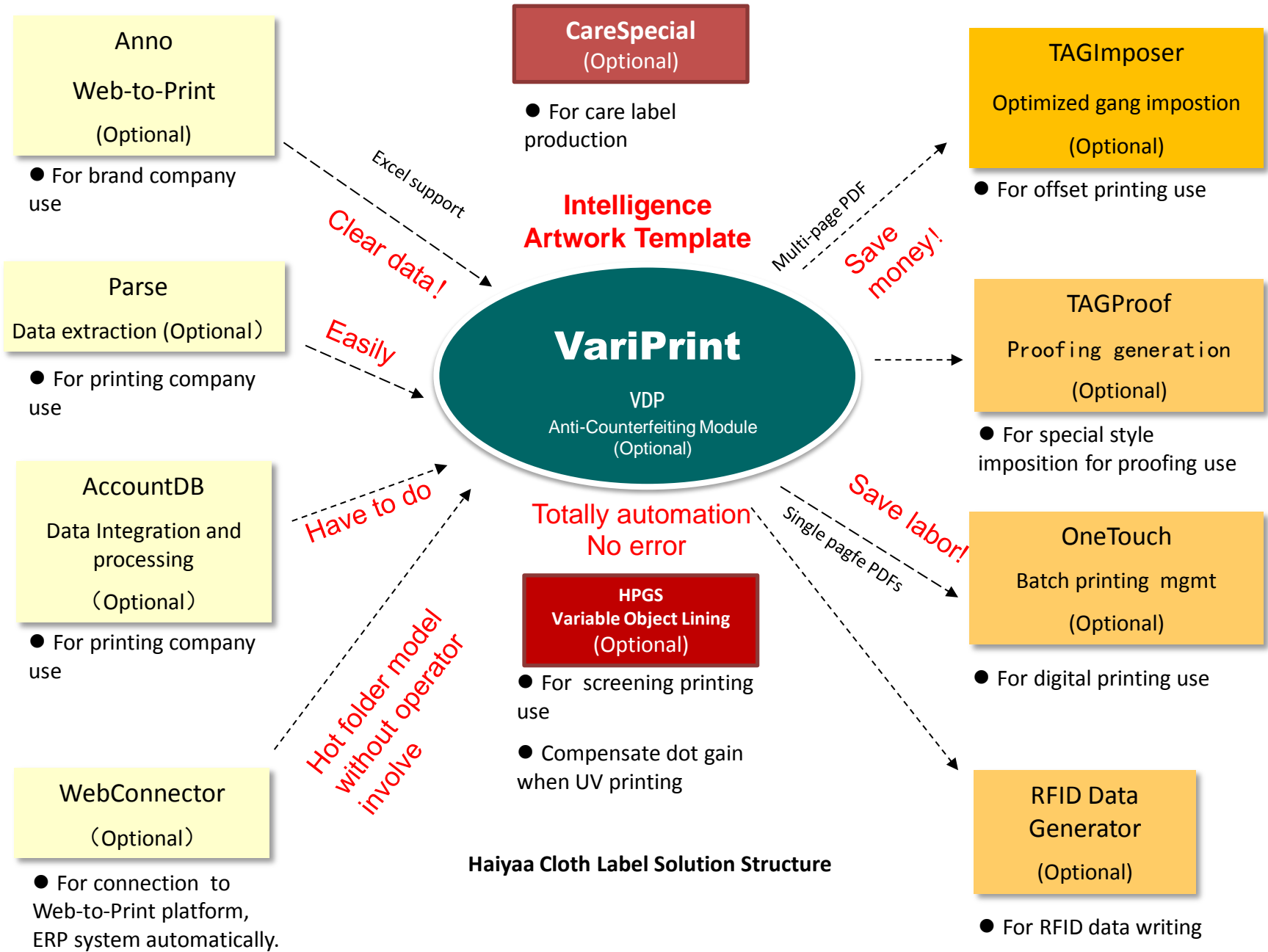
(ver202008)

HAIYAA

Cloth Label

Brands served by Haiyaa's customers





Haiyaa Cloth Label Solution Structure

Select Assistant or Full solution depends on investment and demands



WebConnector



#Asst

- VariPrint Designer
- AccountDB optional

Note: Above tools hare ONE dongle.

-
-
-



#Full

- VariPrint Pro
- AccountDB optional



#Full

- VariPrint Pro
- AccountDB optional

Note: Above tools hare ONE dongle.

Garment Tag Production Dept.



- TAGImposer imposition

Note: Use its own dongle.

Offset, screening and flexo



Key components introduction:

AccountDB: 1) Data integration, 2) Free Style imposition.

VariPrint Pro: Design and layout, print to single SKU tag finally.

VariPrint Designer: Design and layout, can't print to PDF without watermark.

TAGImposer: Impose different SKU tags into one or several pages according to its own quantity. To save plate and paper.

TAGProof: Impose different each one SKU tags into one page or several pages with QTY underline, for proofing use.

WebConnector: Link to the front Web-to-Print or ERP and smooth the whole workflow.



Desktop barcode printer



Digital printer



RFID writing



UV inkjet Single piece printing

- VariPrint Pro
- Security features optional modules

AccountDB:

Data integration and processing: It includes dozen of module. Very special format data processing still need to be customized in additional charge.



e. g.

A	B	C	D	E	F	G	H	I	J
SKU	Product	Barcode	S	M	L	XL	XXL	Price	Factory
FF10001-B2	KIDS	30591790	34	3	45	2	2	2.99	XXX
FF10001-B3	KIDS	30591875	45	23	25	6	12	2.99	XXX

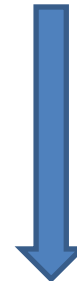


A	B	C	D	E	F	G
SKU	Product	Barcode	Price	Factory	QTY	Size
FF10001-B2	KIDS	30591790	2.99	XXX	34	S
FF10001-B2	KIDS	30591790	2.99	XXX	3	M
FF10001-B2	KIDS	30591790	2.99	XXX	45	L
FF10001-B2	KIDS	30591790	2.99	XXX	2	XL
FF10001-B2	KIDS	30591790	2.99	XXX	2	XXL
FF10001-B3	KIDS	30591875	2.99	XXX	45	S
FF10001-B3	KIDS	30591875	2.99	XXX	23	M
FF10001-B3	KIDS	30591875	2.99	XXX	25	L
FF10001-B3	KIDS	30591875	2.99	XXX	6	XL
FF10001-B3	KIDS	30591875	2.99	XXX	12	XXL

e. g.

ITEM#	BARCODE	SKU/PLU	COLOR	SIZE	PRICE	DESC	QTY	FABRIC CONTENT
PO20130204	400001234567	5414089	WHITE	S	\$5.900	Model A	210	57%Cotton 38%Polyester 5%Spandex
				M	\$5.900	Model A	420	
				L	\$5.900	Model A	630	
				XL	\$5.900	Model A	420	
400002234567	5414096	CORAL GLOW	S	\$5.900	Model A	210		
			M	\$5.900	Model A	420		
			L	\$5.900	Model A	630		
			XL	\$5.900	Model A	420		
400003456567	5414102	WHITE	S	\$5.900	Model B	210		
			M	\$5.900	Model B	420		
			L	\$5.900	Model B	630		
			XL	\$5.900	Model B	420		
400004654321	5414119	CORAL GLOW	S	\$5.900	Model B	210		
			M	\$5.900	Model B	420		
			L	\$5.900	Model B	630		
			XL	\$5.900	Model B	420		
4000042234567	5414126	BLACK/CORAL GLOW	S	\$7.900	Model C	450		
			M	\$7.900	Model C	900		
			L	\$7.900	Model C	1350		
			XL	\$7.900	Model C	900		
4000042376833	5414140	BLACK/CITRON	S	\$7.900	Model C	340		
			M	\$7.900	Model C	680		
			L	\$7.900	Model C	1020		
			XL	\$7.900	Model C	680		

ITEM#	BARCODE	SKU/PLU	COLOR	SIZE	PRICE	DESC	QTY	FABRIC CONTENT
PO20130204	400001234567	5414089	WHITE	S	5.9	Model A	221	57%Cotton 38%Polyester 5%Spandex
PO20130204	400001234567	5414089	WHITE	M	5.9	Model A	441	57%Cotton 38%Polyester 5%Spandex
PO20130204	400001234567	5414089	WHITE	L	5.9	Model A	662	57%Cotton 38%Polyester 5%Spandex
PO20130204	400001234567	5414089	WHITE	XL	5.9	Model A	441	57%Cotton 38%Polyester 5%Spandex
PO20130204	400002234567	5414096	CORAL GLOW	S	5.9	Model A	221	57%Cotton 38%Polyester 5%Spandex
PO20130204	400002234567	5414096	CORAL GLOW	M	5.9	Model A	441	57%Cotton 38%Polyester 5%Spandex
PO20130204	400002234567	5414096	CORAL GLOW	L	5.9	Model A	662	57%Cotton 38%Polyester 5%Spandex
PO20130204	400002234567	5414096	CORAL GLOW	XL	5.9	Model A	441	57%Cotton 38%Polyester 5%Spandex
PO20130204	400003456567	5414102	WHITE	S	5.9	Model B	221	57%Cotton 38%Polyester 5%Spandex
PO20130204	400003456567	5414102	WHITE	M	5.9	Model B	441	57%Cotton 38%Polyester 5%Spandex
PO20130204	400003456567	5414102	WHITE	L	5.9	Model B	662	57%Cotton 38%Polyester 5%Spandex
PO20130204	400003456567	5414102	WHITE	XL	5.9	Model B	441	57%Cotton 38%Polyester 5%Spandex
PO20130204	400004654321	5414119	CORAL GLOW	S	5.9	Model B	221	57%Cotton 38%Polyester 5%Spandex
PO20130204	400004654321	5414119	CORAL GLOW	M	5.9	Model B	441	57%Cotton 38%Polyester 5%Spandex
PO20130204	400004654321	5414119	CORAL GLOW	L	5.9	Model B	662	57%Cotton 38%Polyester 5%Spandex
PO20130204	400004654321	5414119	CORAL GLOW	XL	5.9	Model B	441	57%Cotton 38%Polyester 5%Spandex
PO20130204	4000042234567	5414126	BLACK/CORAL GLOW	S	7.9	Model C	473	57%Cotton 38%Polyester 5%Spandex
PO20130204	4000042234567	5414126	BLACK/CORAL GLOW	M	7.9	Model C	945	57%Cotton 38%Polyester 5%Spandex
PO20130204	4000042234567	5414126	BLACK/CORAL GLOW	L	7.9	Model C	1418	57%Cotton 38%Polyester 5%Spandex
PO20130204	4000042234567	5414126	BLACK/CORAL GLOW	XL	7.9	Model C	945	57%Cotton 38%Polyester 5%Spandex
PO20130204	4000042376833	5414140	BLACK/CITRON	S	7.9	Model C	357	57%Cotton 38%Polyester 5%Spandex
PO20130204	4000042376833	5414140	BLACK/CITRON	M	7.9	Model C	714	57%Cotton 38%Polyester 5%Spandex
PO20130204	4000042376833	5414140	BLACK/CITRON	L	7.9	Model C	1071	57%Cotton 38%Polyester 5%Spandex
PO20130204	4000042376833	5414140	BLACK/CITRON	XL	7.9	Model C	714	57%Cotton 38%Polyester 5%Spandex



Combine two data file together according to index fieldname setting

e. g.

E	F	G	H	I	J	K	L
品名	颜色		尺码	款号	号型1	条形码	面料
基础吊带	米白		S	W018WI0302	155/80A		92%棉 8%氨纶
基础吊带	米白		M	W018WI0302	160/84A		92%棉 8%氨纶
基础吊带	米白		L	W018WI0302	165/88A		92%棉 8%氨纶
基础吊带	米白		XL	W018WI0302	170/92A		92%棉 8%氨纶
基础吊带	浅粉		S	W018WI0302	155/80A		92%棉 8%氨纶
基础吊带	浅粉		M	W018WI0302	160/84A		92%棉 8%氨纶
基础吊带	浅粉		L	W018WI0302	165/88A		92%棉 8%氨纶
基础吊带	浅粉		XL	W018WI0302	170/92A		92%棉 8%氨纶
基础吊带	黑色		S	W018WI0302	155/80A		92%棉 8%氨纶
基础吊带	黑色		M	W018WI0302	160/84A		92%棉 8%氨纶
基础吊带	黑色		L	W018WI0302	165/88A		92%棉 8%氨纶
基础吊带	黑色		XL	W018WI0302	170/92A		92%棉 8%氨纶

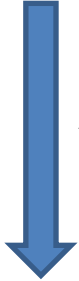
Main data

	A	B	C	D	E	F	G
1	商品条码	产品名称	款号	颜色	尺码	吊牌价	
2	6957835037180	圆领上衣W018WL0403	W018WL0403	本白	S	229	
3	6957835037197	圆领上衣W018WL0403	W018WL0403	本白	M	229	
4	6957835037203	圆领上衣W018WL0403	W018WL0403	本白	L	229	
5	6957835037210	圆领上衣W018WL0403	W018WL0403	本白	XL	229	
6	6957835037227	圆领上衣W018WL0403	W018WL0403	灰色	S	229	
7	6957835037234	圆领上衣W018WL0403	W018WL0403	灰色	M	229	
8	6957835037241	圆领上衣W018WL0403	W018WL0403	灰色	L	229	

Assistant data or reference data

Add barcode to main data file from the reference data file by setting index, such as SKU No. Size, Color.

E	F	G	H	I	J	K	L
品名	颜色		尺码	款号	号型1	条形码	面料
基础吊带	米白		S	W018WI0302	155/80A	6957835037180	92%棉 8%氨纶
基础吊带	米白		M	W018WI0302	160/84A	6957835037197	92%棉 8%氨纶
基础吊带	米白		L	W018WI0302	165/88A	6957835037203	92%棉 8%氨纶
基础吊带	米白		XL	W018WI0302	170/92A	6957835037210	92%棉 8%氨纶
基础吊带	浅粉		S	W018WI0302	155/80A	6957835037227	92%棉 8%氨纶
基础吊带	浅粉		M	W018WI0302	160/84A	6957835037234	92%棉 8%氨纶
基础吊带	浅粉		L	W018WI0302	165/88A	6957835037241	92%棉 8%氨纶
基础吊带	浅粉		XL	W018WI0302	170/92A	6957835037258	92%棉 8%氨纶
基础吊带	黑色		S	W018WI0302	155/80A	6957835037265	92%棉 8%氨纶
基础吊带	黑色		M	W018WI0302	160/84A	6957835037272	92%棉 8%氨纶
基础吊带	黑色		L	W018WI0302	165/88A	6957835037289	92%棉 8%氨纶
基础吊带	黑色		XL	W018WI0302	170/92A	6957835037296	92%棉 8%氨纶



TAGProof :

1) Proofing production for hangtag and care label



- Single side proofing



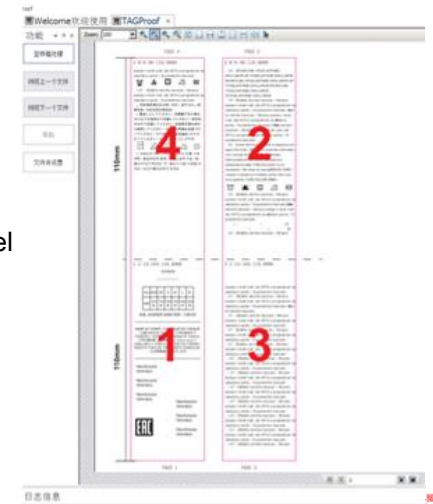
- Two side proofing



2) Free style imposition: provide several kinds of special imposition mode. Note: It hasn't optimized plate saving paper saving algorithm.



- Care label proofing



Digital or offset printing

* Tail-to-tail, work as database sequence, haven't optimized plate saving paper saving algorithm .



Free style sample

VariPrint Pro:

1) The core platform of all Haiyaa solutions.

2) Apply to garment tag production

VariPrint Pro vs Designer:

- The same design and layout features
- Pro can print to PDF without watermark, Designer can't. Both version accept MPD produced by both of versions.
- Designer is suitable for more job production environment.

Application1



- For AccountDB to produce proofing
- For TAGImposer to produce optimized imposition

Application2

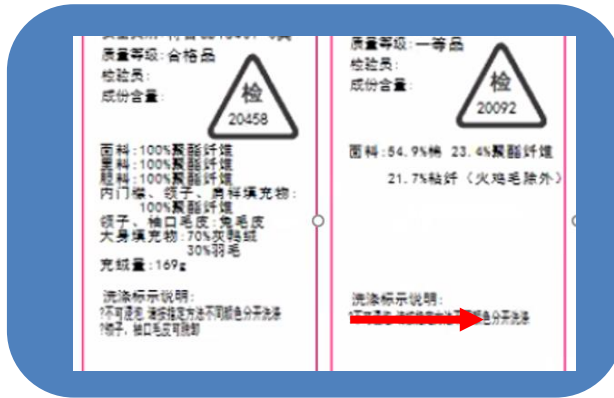


- One SKU one paper, for digital printing

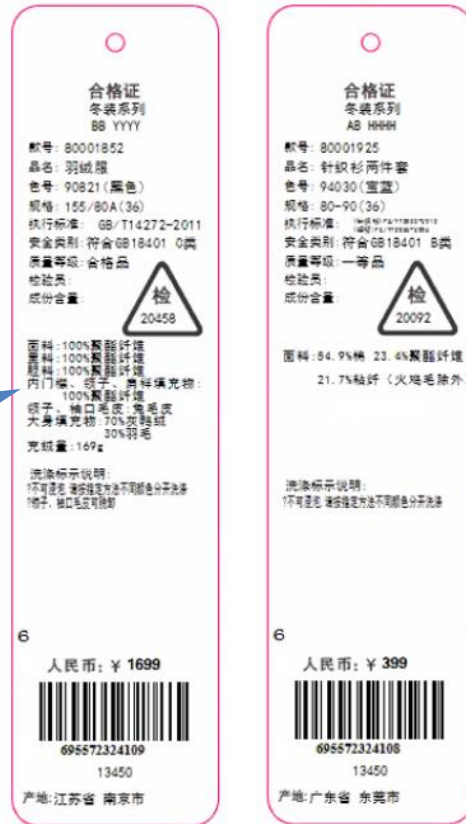
Intelligence Artwork Template

Reduce Artwork Templates, Reduce errors, Reduce Prepress Time, Easy to Manage

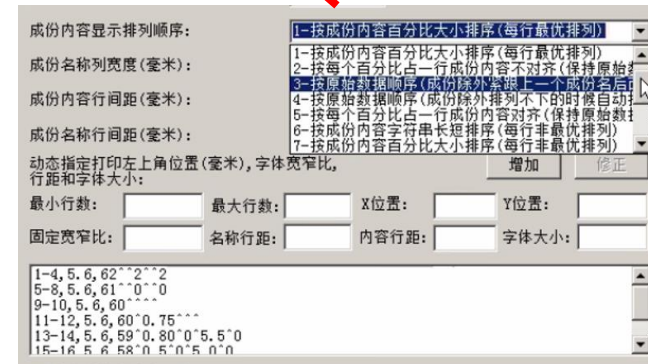
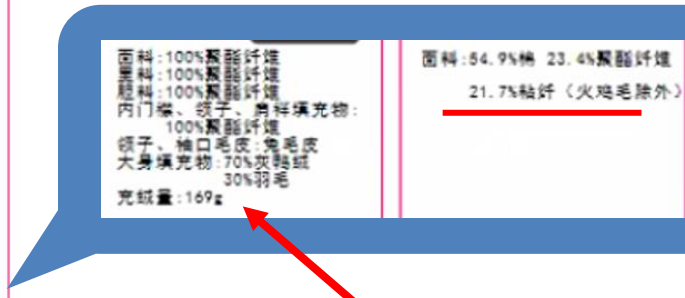
- One template cover all composition styles



Pain Point - 1) conventional method needs many template. If Brand change any style/formatting, they need to change all template again. **2)** The user need separate order Excel to several to match with different template.



AI Formatting



Rules, Logic, Styles etc

TAGImposer:

- 1) Gang impose different SKU tags into one or several pages according to each SKU's quantity.. Print to imposed PDF directly with all of imposition marks.
- 2) Purpose: To save plate and paper , mainly for offset printing.



Digital printing or
offset printing

* Tail-to-tail imposition

3) For digital printing



1. Digital printing example - 20 SKU optimize into one layout to save on finishing die like **coating/emboss/foiling/hot-stamp...**

2. Digital printing – low volume, S/M/L, cut and stack stepping requirement.

RFID Data generation:

- 1) Output PDFs for each SKU and send to UV Printer.
- 2) Generate RFID data for RFID writing equipment use.

	A	B	C	D	E	F
1	ID	BARCODE	EPC	ACCESS	KILL	USER
2	3301	HKMCJ2E069A79005A11	50001F393508C0000019	11111111	22222222	33333333
3	3302	HKMCJ2E069A79005A11	50001F393508C0000029	11111111	22222222	33333333
4	3303	HKMCJ2E069A79005A11	50001F393508C0000039	11111111	22222222	33333333
5	3304	HKMCJ2E069A79005A11	50001F393508C0000049	11111111	22222222	33333333
6	3305	HKMCJ2E069A79005A11	50001F393508C0000059	11111111	22222222	33333333
7	3306	HKMCJ2E069A79005A11	50001F393508C0000069	11111111	22222222	33333333
8	3307	HKMCJ2E069A79005A11	50001F393508C0000079	11111111	22222222	33333333
9	3308	HKMCJ2E069A79005A11	50001F393508C0000089	11111111	22222222	33333333
10	3309	HKMCJ2E069A79005A11	50001F393508C0000099	11111111	22222222	33333333
11	3310	HKMCJ2E069A79005A11	50001F393508C00000A9	11111111	22222222	33333333
12	3311	HKMCJ2E069A79005A11	50001F393508C00000B9	11111111	22222222	33333333
13	3312	HKMCJ2E069A79005A11	50001F393508C00000C9	11111111	22222222	33333333
14	3313	HKMCJ2E069A79005A11	50001F393508C00000D9	11111111	22222222	33333333
15	3314	HKMCJ2E069A79005A11	50001F393508C00000E9	11111111	22222222	33333333
16	3315	HKMCJ2E069A79005A11	50001F393508C00000F9	11111111	22222222	33333333
17	3316	HKMCJ2E069A79005A11	50001F393508C0000109	11111111	22222222	33333333
18	3317	HKMCJ2E069A79005A11	50001F393508C0000119	11111111	22222222	33333333
19	3318	HKMCJ2E069A79005A11	50001F393508C0000129	11111111	22222222	33333333
20	3319	HKMCJ2E069A79005A11	50001F393508C0000139	11111111	22222222	33333333
21	3320	HKMCJ2E069A79005A11	50001F393508C0000149	11111111	22222222	33333333
22	3321	HKMCJ2E069A79005A11	50001F393508C0000159	11111111	22222222	33333333
23	3322	HKMCJ2E069A79005A11	50001F393508C0000169	11111111	22222222	33333333
24	3323	HKMCJ2E069A79005A11	50001F393508C0000179	11111111	22222222	33333333
25	3324	HKMCJ2E069A79005A11	50001F393508C0000189	11111111	22222222	33333333
26	3325	HKMCJ2E069A79005A11	50001F393508C0000199	11111111	22222222	33333333
27	3326	HKMCJ2E069A79005A11	50001F393508C00001A9	11111111	22222222	33333333

Desktop barcode printer application:

	B	C
1	Size	QTY
2	S	5
3	M	6
4	L	13

	B	C
1	Size	QTY
2	S	5
3	S	5
4	S	5
5	S	5
6	S	5
7		
8		
9		
10	M	6
11	M	6
12	M	6
13	M	6
14	M	6
15	M	6
16		
17		
18	L	13
19	L	13
20	L	13
21	L	13
22	L	13
23	L	13
24	L	13
25	L	13
26	L	13
27	L	13
28	L	13
29	L	13
30	L	13



Through
VariPrint
to design
and print
to PDF

S	S
S	S
S	
M	M
M	M
M	M
L	L
L	L
L	L
L	L
L	L
L	L
L	L
L	L
L	L
L	L
L	

PDF format



Select
printer
driver to
print



Desktop barcode
printer

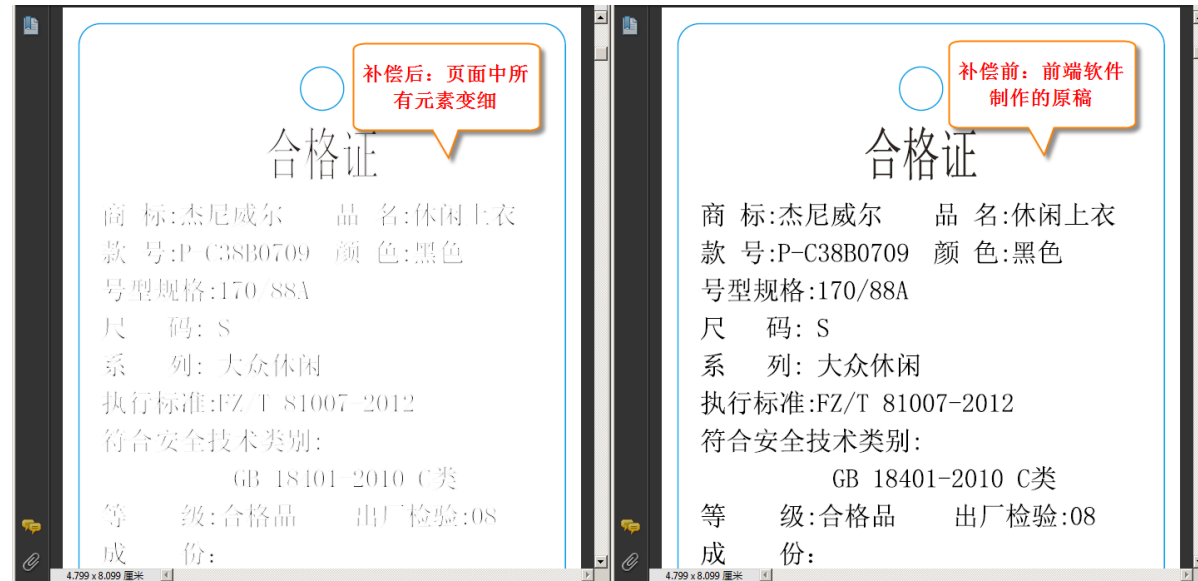
- 1) Data integration automatically
- 2) Design and imposition printing to PDF
- 3) Batch printing and separate by setting blank line freely

HPGS Variable Object Lining



After processing

Before processing

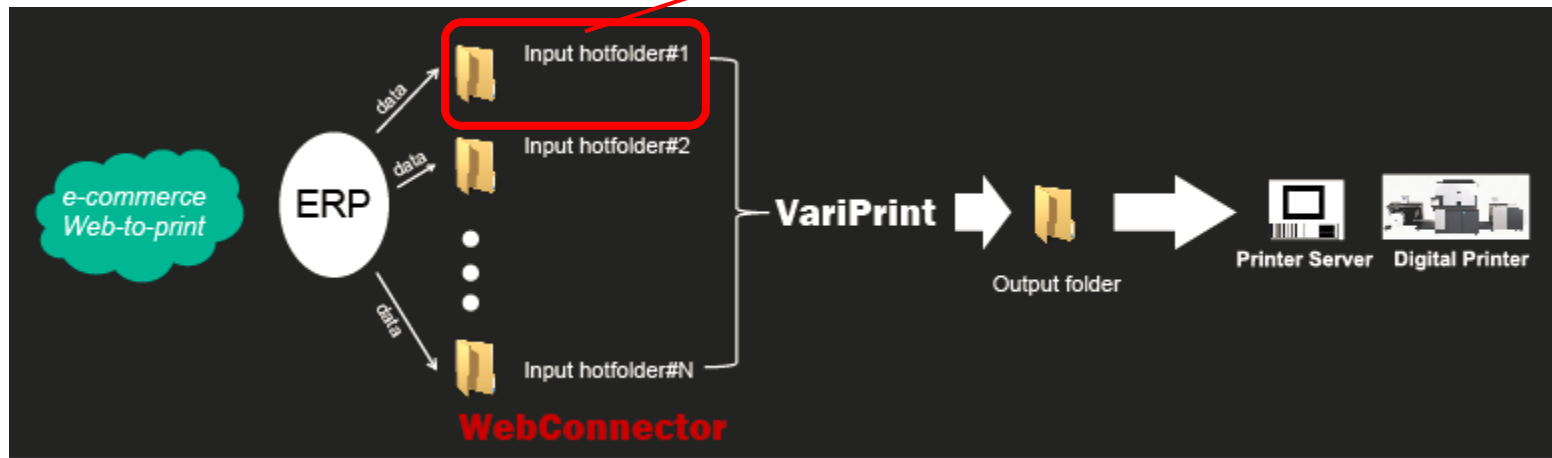
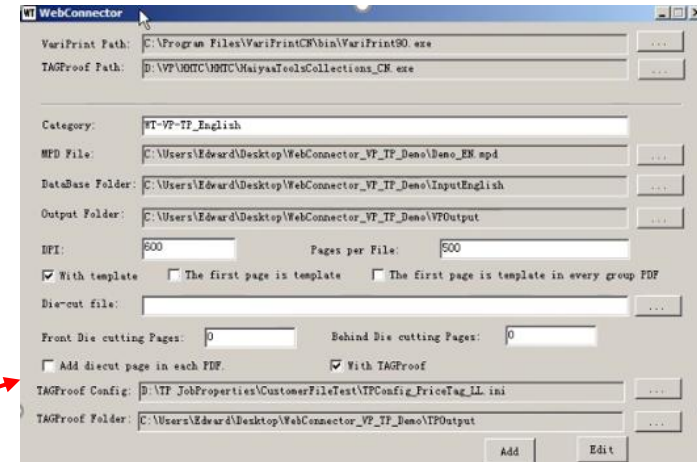


Usage2: Compensate the heavy dot gain on the UV printer by micro adjusting the outline of the content incl. text and barcode
Note: Barcode black line width can also be adjusted at pixel level in the VariPrint.

Usage1: Batch PDFs generation with outline change and overprinted for screening printing use from an single original PDF

WebConnector

WebConnector is a multi-task manager for variable printing. It works with VariPrint and let VariPrint to be the background variable job production engine.



Note:

Every input hotfolder links to the different job project file and printing properties. Once we find new data comes in, VariPrint will action at the background without the operator involve.